



# CONSTRUCTION ALERT

## Intermittent Traffic Impacts Along And Near State Route 41, Kansas Avenue, State Route 43, And Avenue 136 In Kings And Tulare Counties

**Kings And Tulare Counties, Calif.** – The California High-Speed Rail Authority (Authority), in cooperation with design-build contractor Dragados-Flatiron Joint Venture (DFJV), announces intermittent traffic impacts along State Route (SR) 41, Kansas Avenue, State Route (SR) 43 and Avenue 136 in Kings and Tulare Counties to transport material to a high-speed rail construction site. Hauling is scheduled intermittently between 6 a.m. and 5 p.m. starting Tuesday, April 1 through Tuesday, April 15, 2025.

*This work is part of Construction Package 2-3 (CP 2-3), the 65-mile stretch of high-speed rail between East American Avenue in Fresno County and one-mile north of the Tulare-Kern County line.*

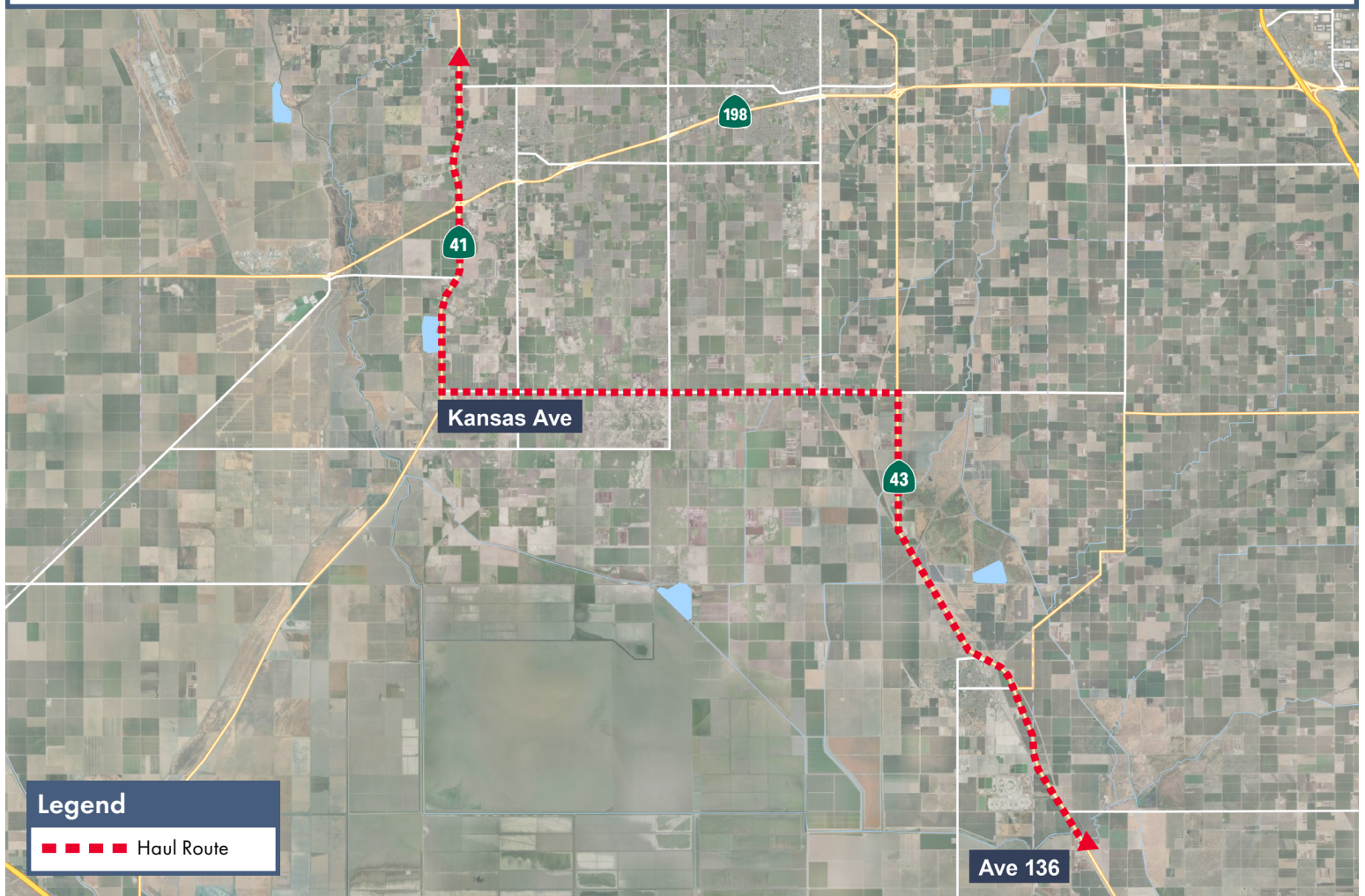
### Closure And Detour Information:

Intermittent traffic impacts along State Route (SR) 41, Kansas Avenue, State Route (SR) 43 and Avenue 136 in Kings and Tulare Counties.

**Hauling is scheduled intermittently between 6 a.m. and 5 p.m. starting Tuesday, April 1 through Tuesday, April 15, 2025.**

#### Haul Route

Material will be transported south on SR 41 in Lemoore to Kansas Avenue. Trucks will travel east on Kansas Avenue to SR 43 and travel southbound to a high-speed rail construction site on Avenue 136.



#### Legend

— Haul Route

### Contact Us:

Augie Blancas  
California High-Speed Rail  
(559) 720-6695  
Augie.Blancas@hsr.ca.gov

Ramiro Diaz  
California High-Speed Rail  
(559) 577-2246  
Ramiro.Diaz@hsr.ca.gov  
Para más información en Español.

Rachael Ray  
Dragados-Flatiron Joint Venture  
(559) 356-7234  
pim@dfcp23.com

Scan QR Code For More Information,  
Connect To Our Websites And Follow  
Us On Social Media. This Information  
Is Subject To Change.

