



# CONSTRUCTION ALERT

## Intermittent Traffic Impacts Along State Route 43 In Fresno County

**Fresno County, Calif.** – The California High-Speed Rail Authority (Authority), in cooperation with design-build contractor Dragados-Flatiron Joint Venture (DFJV), announces intermittent traffic impacts along State Route (SR) 43, between Davis Avenue and Cole Slough in Fresno County for work on a high-speed rail structure. Work is scheduled from 2 a.m. to 11 a.m. on Tuesday, May 20, 2025.

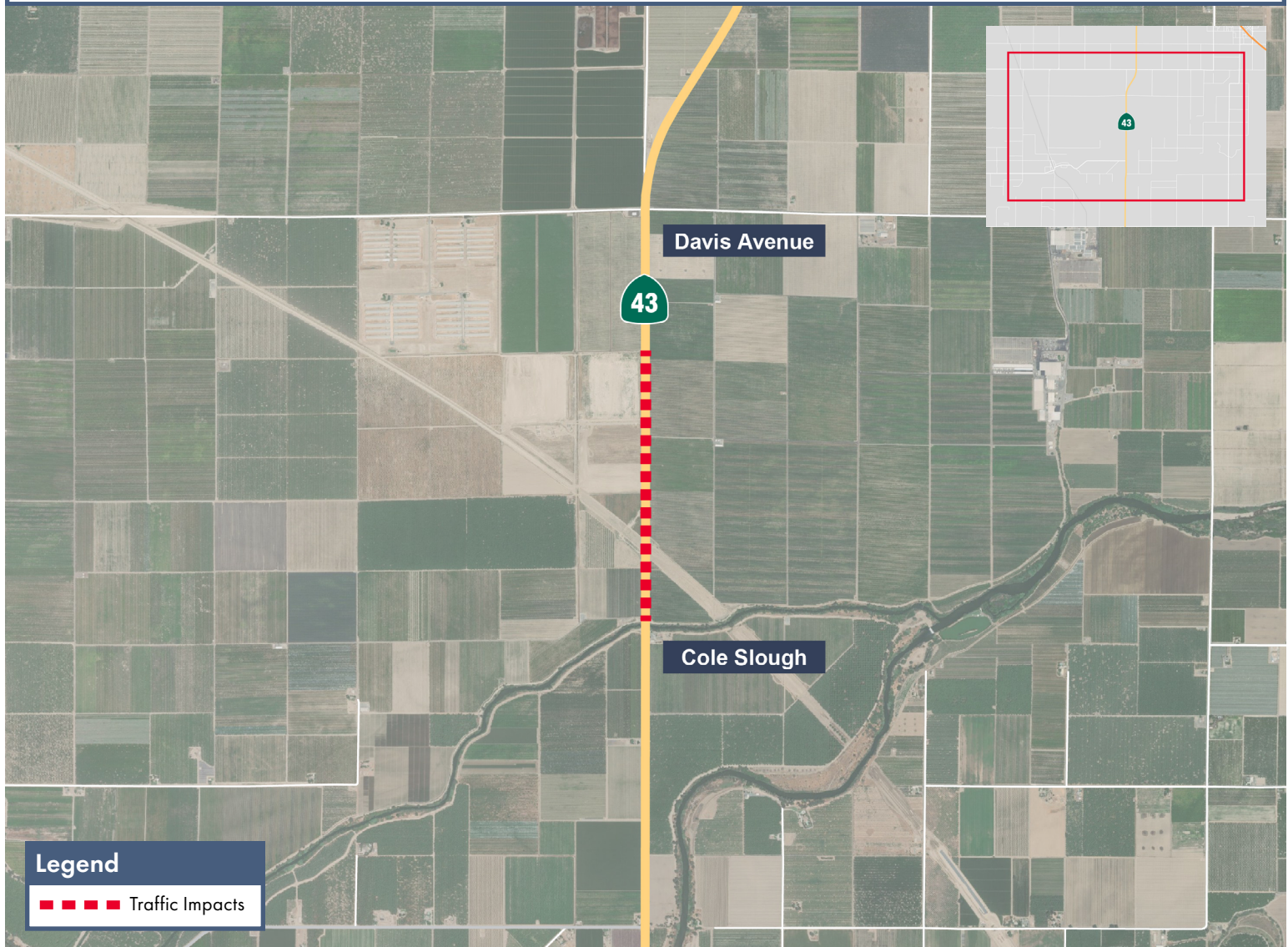
*This work is part of Construction Package 2-3 (CP 2-3), the 65-mile stretch of high-speed rail between East American Avenue in Fresno County and one-mile north of the Tulare-Kern County line.*

### Closure And Detour Information:

Intermittent traffic impacts along SR 43, between Davis Avenue and Cole Slough in Fresno County for work on a high-speed rail structure.

**Work is scheduled from 2 a.m. to 11 a.m. on Tuesday, May 20, 2025.**

**Signage and flaggers will be in place to direct traffic.**



### Contact Us:

Augie Blancas  
California High-Speed Rail  
(559) 720-6695  
Augie.Blancas@hsr.ca.gov

Ramiro Diaz  
California High-Speed Rail  
(559) 577-2246  
Ramiro.Diaz@hsr.ca.gov  
Para más información en Español.

Rachael Ray  
Dragados-Flatiron Joint Venture  
(559) 356-7234  
pim@dfcp23.com

Scan QR Code For More Information,  
Connect To Our Websites And Follow  
Us On Social Media. This Information  
Is Subject To Change.

