



CONSTRUCTION ALERT

Intermittent Lane Closures Along State Route 198 In Kings County

Kings County, Calif. – The California High-Speed Rail Authority (Authority), in cooperation with design-build contractor Dragados-Flatiron Joint Venture (DFJV), announces intermittent lane closures along State Route (SR) 198, between Sixth Avenue and SR 43 in Kings County for ongoing work at the Hanford Viaduct. Closures will be intermittent from 6 a.m. to 9 p.m. starting Monday, Jan. 6 through Friday, Jan. 10, 2025.

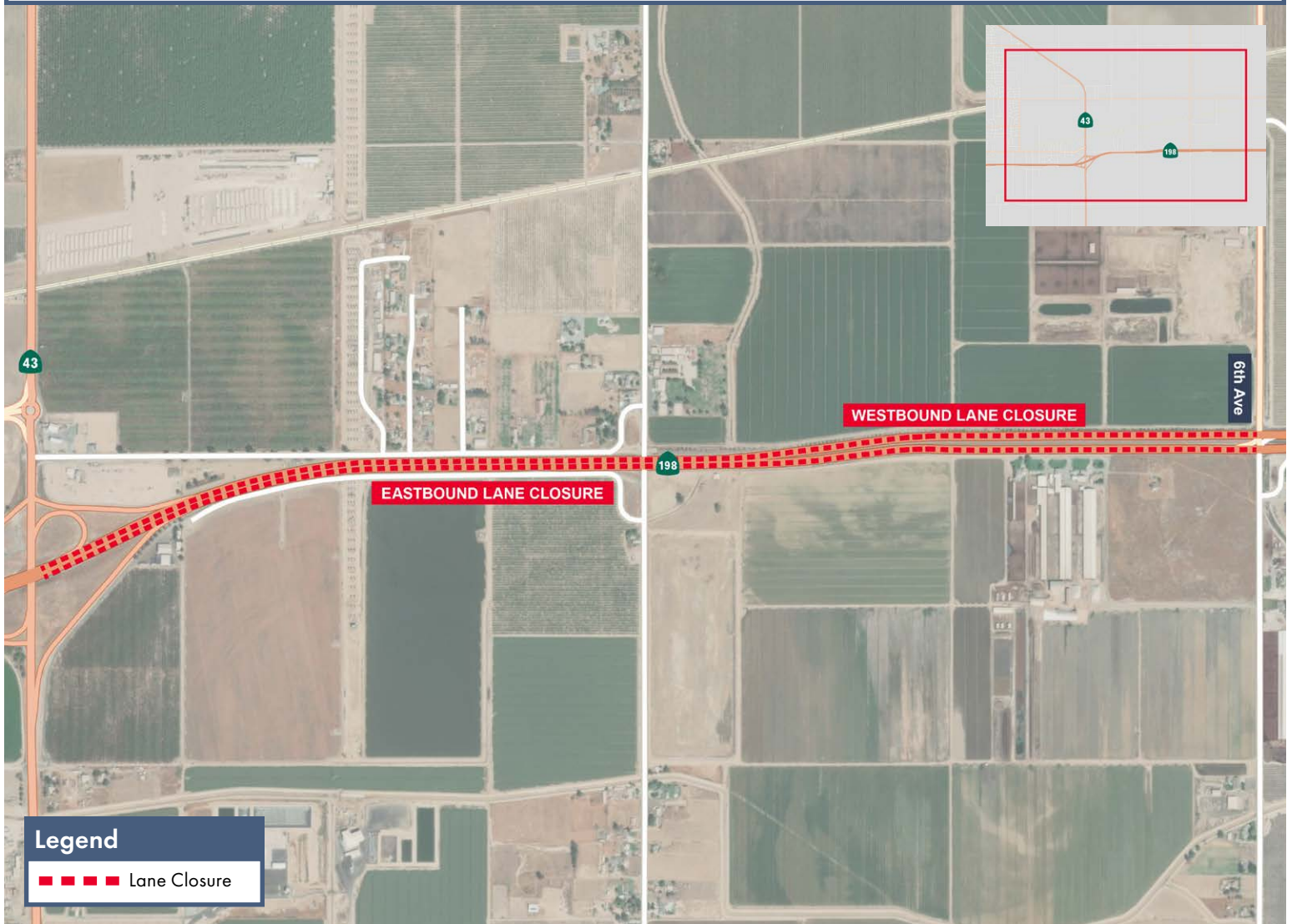
This work is part of Construction Package 2-3 (CP 2-3), the 65-mile stretch of high-speed rail between East American Avenue in Fresno County and one-mile north of the Tulare-Kern County line.

Closure And Detour Information:

Intermittent lane closures along SR 198, between Sixth Avenue and SR 43 in Kings County for ongoing work at the Hanford Viaduct.

Closures will be intermittent from 6 a.m. to 9 p.m. starting Monday, Jan. 6 through Friday, Jan. 10, 2025.

Signage will be in place to direct traffic. Drivers may experience delays.



Contact Us:

Augie Blancas
California High-Speed Rail
(559) 720-6695
Augie.Blancas@hsr.ca.gov

Ramiro Diaz
California High-Speed Rail
(559) 577-2246
Ramiro.Diaz@hsr.ca.gov
Para más información en Español.

Rachael Ray
Dragados-Flatiron Joint Venture
(559) 356-7234
pim@dfcp23.com

Scan QR Code For More Information,
Connect To Our Websites And Follow
Us On Social Media. This Information
Is Subject To Change.

