



CONSTRUCTION ALERT

Intermittent Traffic Impacts Along And Near State Route 43 In Fresno, Kings And Tulare Counties

Fresno, Kings & Tulare Counties, Calif. – The California High-Speed Rail Authority (Authority), in cooperation with design-build contractor Dragados-Flatiron Joint Venture (DFJV), announces intermittent traffic impacts along State Route (SR) 43, in Fresno, Kings and Tulare counties to transport material to a high-speed rail construction site. Hauling is scheduled intermittently between 6 a.m. and 5 p.m. starting Tuesday, April 1 through Tuesday, April 15, 2025.

This work is part of Construction Package 2-3 (CP 2-3), the 65-mile stretch of high-speed rail between East American Avenue in Fresno County and one-mile north of the Tulare-Kern County line.

Closure And Detour Information:

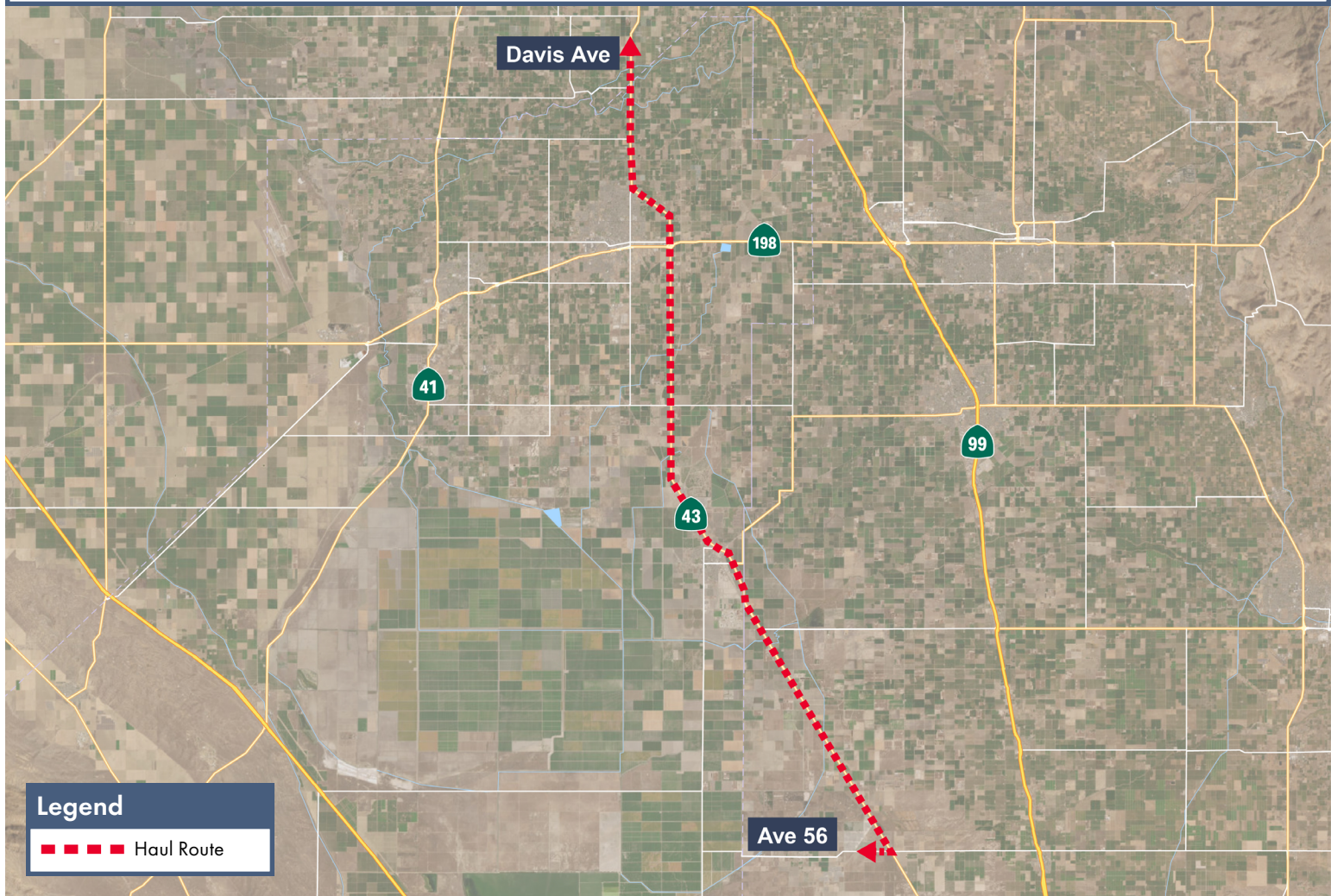
Intermittent traffic impacts along southbound State Route (SR) 43 between Davis Avenue and Avenue 56.

Hauling is scheduled intermittently between 6 a.m. and 5 p.m. starting Tuesday, April 1 through Tuesday, April 15, 2025.

Haul Route

Materials will be transported south on SR 43 from a private road south of Davis Avenue to a high-speed rail construction site on Avenue 56.

Traffic may experience delays.



Contact Us:

Augie Blancas
California High-Speed Rail
(559) 720-6695
Augie.Blancas@hsr.ca.gov

Ramiro Diaz
California High-Speed Rail
(559) 577-2246
Ramiro.Diaz@hsr.ca.gov
Para más información en Español.

Rachael Ray
Dragados-Flatiron Joint Venture
(559) 356-7234
pim@dfcp23.com

Scan QR Code For More Information,
Connect To Our Websites And Follow
Us On Social Media. This Information
Is Subject To Change.

