



CONSTRUCTION ALERT

Intermittent Traffic Impacts Along State Route 43 And Lansing Avenue In Kings County

Kings County, Calif. – The California High-Speed Rail Authority (Authority), in cooperation with design-build contractor Dragados-Flatiron Joint Venture (DFJV), announces intermittent traffic impacts along State Route (SR) 43 and Lansing Avenue in Kings County to transport embankment material to a high-speed rail construction site. Hauling is scheduled from 6:30 a.m. to 5 p.m. beginning Monday, March 31 and will continue through Friday, April 25, 2025.

This work is part of Construction Package 2-3 (CP 2-3), the 65-mile stretch of high-speed rail between East American Avenue in Fresno County and one-mile north of the Tulare-Kern County line.

Closure And Detour Information:

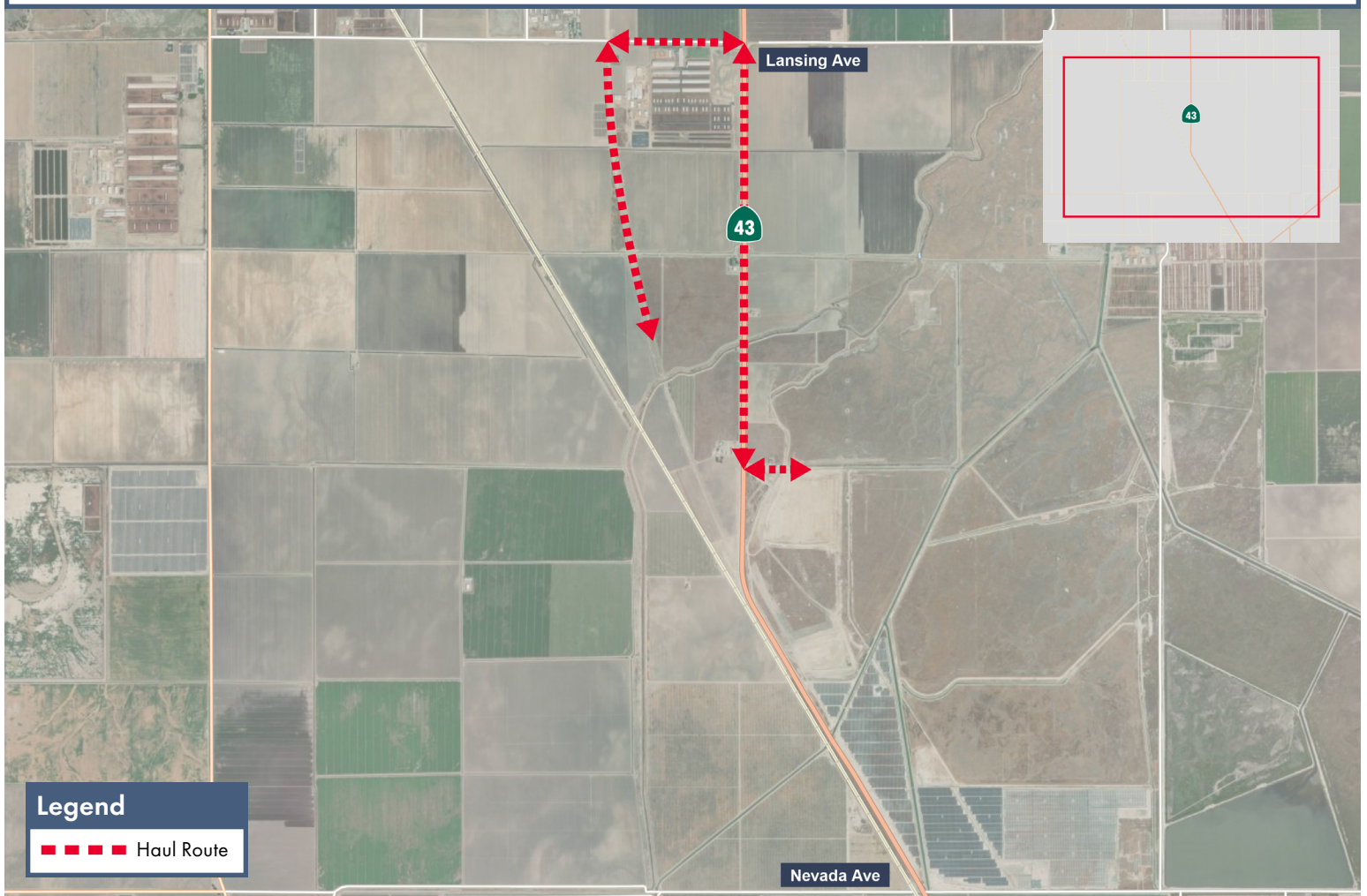
Intermittent traffic impacts along SR 43 and Lansing Avenue in Kings County to transport embankment material.

Hauling is scheduled from 6:30 a.m. to 5 p.m. beginning Monday March 31 and will continue through Friday, April 25, 2025.

Haul Route

Material will be hauled north on State Route 43, north of Nevada Avenue to Lansing Avenue. Trucks will head west on Lansing Avenue to a high-speed rail construction site.

Drivers may experience delays.



Contact Us:

Augie Blancas
California High-Speed Rail
(559) 720-6695
Augie.Blancas@hsr.ca.gov

Ramiro Diaz
California High-Speed Rail
(559) 577-2246
Ramiro.Diaz@hsr.ca.gov
Para más información en Español.

Rachael Ray
Dragados-Flatiron Joint Venture
(559) 356-7234
pim@dfcp23.com

Scan QR Code For More Information, Connect To Our Websites And Follow Us On Social Media. This Information Is Subject To Change.

